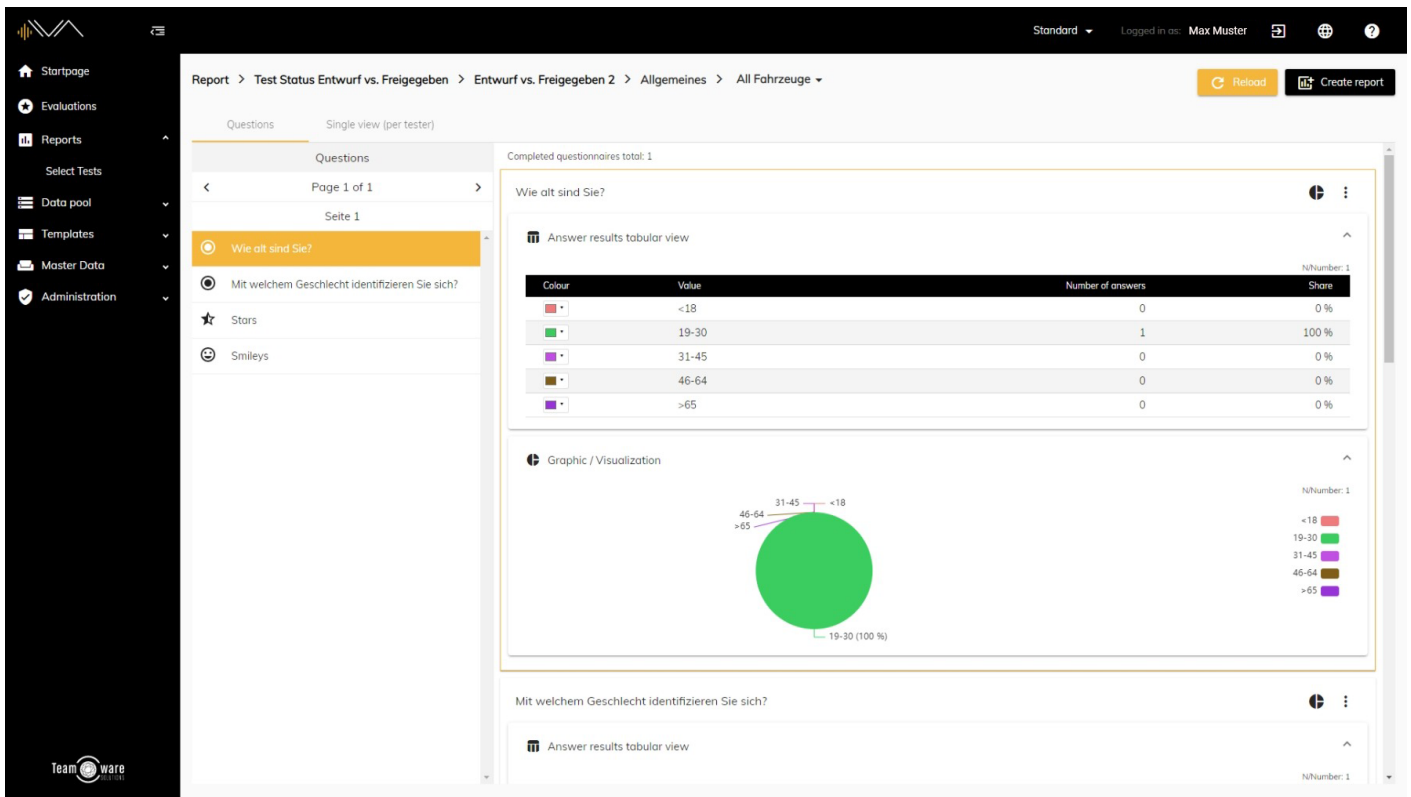


Questionnaire Reports



First of all, you need to navigate to the corresponding menu item. To do this, click on "Reports"->"Selected Tests" in the left navigation bar and click on the corresponding test under the corresponding evaluation. Now you can select the desired test object and click on the "Question Catalog" tile there. Now you will get to a new page. There you will see a list with the respective questions, a tabular as well as a graphical evaluation of the answers. You can change the type of the displayed diagram by clicking on the cake-like icon. Furthermore, you can copy the diagram as well as the table with a click on the three-dot icon and also hide questions.

In the left column you have the possibility to switch between the individual pages as well as the individual questions of the questionnaire. With a click on the button "Create report" in the upper right corner, you can export the data as CSV or create and download a PDF.

Revision #4

Created 3 March 2021 10:38:19

Updated 5 June 2024 22:45:55 by sgu