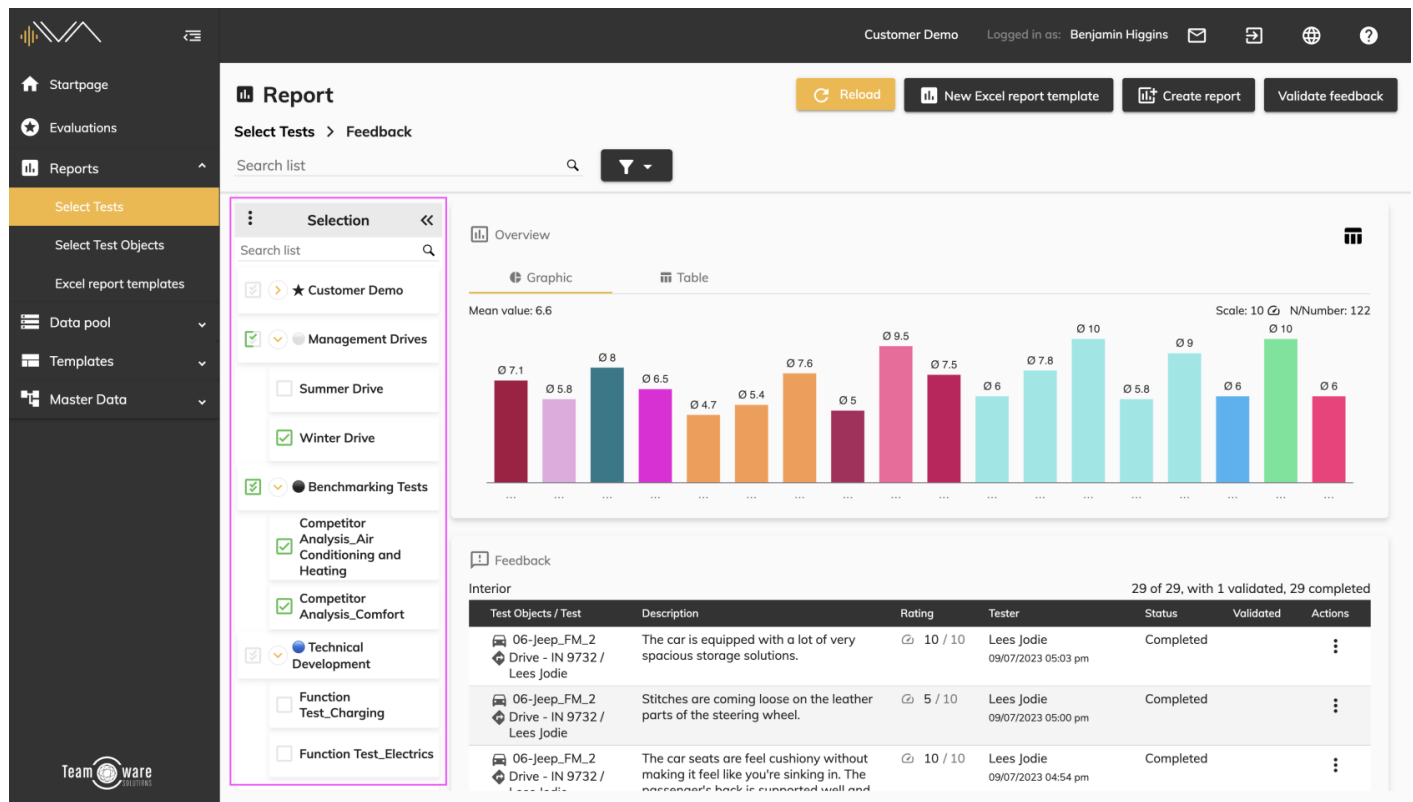


4.0 Filtering by tree selection component

New components in the evaluation, feedback validation and questionnaires



A new component has been developed that enables the precise evaluation of evaluations and tests as well as test objects. This is the tree selection component, which is always located on the left-hand side and can be collapsed or expanded. It has been added at various points in the reports:

- Select Tests -> Feedback result tile
- Select Tests -> Questionnaires results tile
- Select Test Objects -> Feedback results tile
- Select Test Objects-> Questionnaires results tile
- Validate feedback

A search in the list is also possible.

By setting up more targeted searches and selecting/compiling relevant evaluations, tests and test objects, efficiency and targeted analysis are optimized in the evaluation.

A detailed description can be found here: [LINK to the manual](#)

Revision #7

Created 24 May 2024 08:27:20 by vmu

Updated 5 June 2024 08:36:13 by vmu